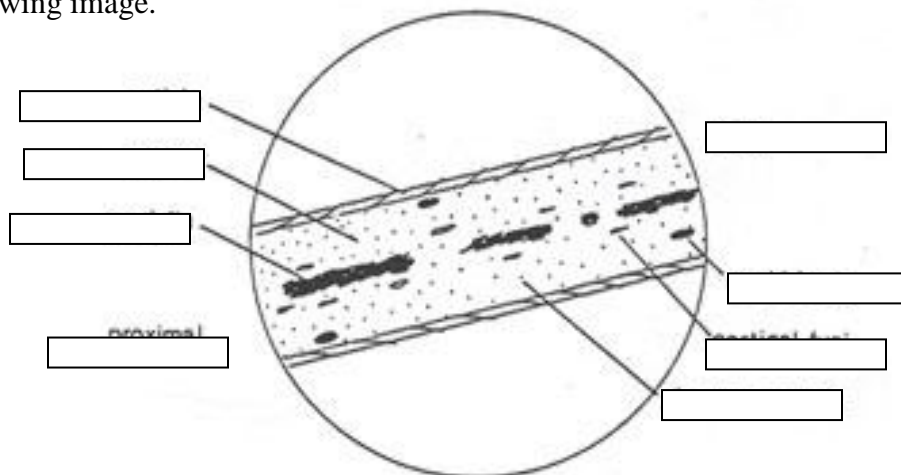


### Forensic Hair Analysis Web Quest

**Hair Diagrams and Patterns:** [http://www.fbi.gov/about-us/lab/forensic-science-communications/fsc/july2004/research/2004\\_03\\_research02.htm](http://www.fbi.gov/about-us/lab/forensic-science-communications/fsc/july2004/research/2004_03_research02.htm)

- Click on Basic Structure of Hair

1. Label the following image.



2. What are the 3 common scale patterns, draw an image and give a specimen example of each.

3. List the 3 Medulla types and draw an image of each.

Case Study – Ennis Cosby

- Google the Ennis Cosby case and discuss the main facts about the case and how hair analysis was involved. (Don't use Wiki!) Cite your source: \_\_\_\_\_

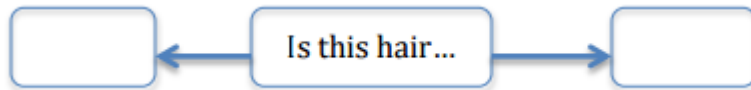
Using the following website, complete the web quest:

<http://www.fbi.gov/about-us/lab/forensic-science-communications/fsc/july2000/deedrick.htm/deedric1.htm>

1. What instrument is typically used to conduct forensic analysis on hairs found at a crime scene?
  
  
  
  
  
  
  
  
  
  
2. What two steps must be done when analyzing a hair from a crime scene?
  
  
  
  
  
  
  
  
  
  
3. Explain how the comparison microscope is useful for analysis of hair evidence in a forensic crime lab.

4. Draw a flow chart of the different steps of the hair examination process:

For Example:



5. Use the article to prove or disprove this statement: All hairs from the same person have the same microscopic characteristics.

6. Describe the different phases of hair growth and the distribution of hairs in each phase on a normal head.

7. Why is it important to forensic investigators the STAGE of hair growth of fibers found at a crime scene?